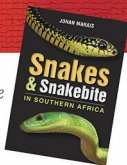




Snakebite Profile

CAPE CORAL SNAKE

Aspidelaps lubricus lubricus



Risk of Bites

Bites to humans are not common. This snake inhabits rocky outcrops and dry sandy areas. It is quick to form a hood, hiss and strike repeatedly when startled or cornered.



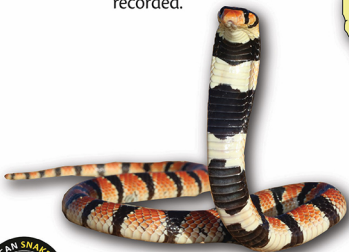
Most Bites

Bites are not common, except for incidents where snake keepers are bitten by captive snakes.



Symptoms & Venom

The venom is predominantly neurotoxic. Symptoms may include pain and swelling. There is no antivenom for the bite of this snake. No human fatalities have been recorded.



See pages 70-71

– Snakes and Snakebite
in Southern Africa
(2024).



First Aid

Immobilise and reassure the patient and elevate the affected limb. Promptly transport the victim to the nearest hospital that has emergency facilities. Avoid all other first aid remedies including bandages.



Medical Treatment

There is no antivenom for bites from this snake, and doctors will treat symptomatically.

