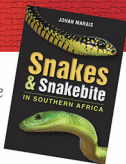




# SNAKEBITE PROFILE

## KUNENE CORAL SNAKE

*Aspidelaps lubricus cowlesi*



### Risk of Bites

Bites to humans are not common. This snake inhabits rocky outcrops and dry sandy areas in Namibia and Angola. It is quick to form a hood, hiss and strike repeatedly when startled or cornered.



### Most Bites

There are four recorded human fatalities from bites from this snake – children bitten at night.



### Symptoms & Venom

The venom is predominantly and dangerously neurotoxic. Symptoms may include pain, swelling of the affected area, nausea, dizziness and respiratory distress.



### First Aid

Immobilise and reassure the patient and elevate the affected limb. Promptly transport the victim to the nearest hospital that has emergency facilities. Resort to artificial respiration if the patient stops breathing.



### Medical Treatment

There is no antivenom for bites from this snake and doctors will treat the bite symptomatically. Ventilation may be required.

